

Distribuzione per l'Italia:

LASER WORKS

ITALIA

Distributore per l'Italia: Laser Works Italia - LWI S.r.l.
Strada Vicinale dei Vignali 28, 00061 Anguillara Sabazia (ROMA), P.IVA 14364901000
TEL. +39 06 999 01235 MAIL: info@laserworks.it
AFTER-SALES: +39 392 532 8320 WEB: www.laserworks.it

The contents of this book are published through the company's research and evaluation, the content is subject to change without notice. HGLASER/ 2018-11-24

HGTECH
LASER

FARLEY-LASERLAB

LASER MARKING MACHINE

PRECISION SERIES
PRODUCTS



HGTECH



COMPANY
INTRODUCTION

HGLASER

 HGTECH

■ HGTECH

For Higher Glory In Manufacture

H5 Program Helps You Easily Get Profit (H: High)

Market rapidly changed, Crisis struck, serious competition in Internet+ Eras.When you confused about how to achieve transformation and upgrading of enterprises; When you are trying to rouse yourself but lack the strength to break through the bottleneck of marketing; When you are still disappointed for the quality of the product of market chaos;When you are still worried about the after sale service.....Please try to find us——HGlaser.



HGlaser official WeChat



HGlaser mobile website

En.hglaser.com

- High Quality
- /
- High Precision
- /
- High Efficiency
- /
- High Cost-efficient
- /
- High Profit



For Higher Glory In Manufacture

HGLaser is a high-tech enterprise, the main business in the field of industrial manufacturing and laser processing. Over the years we have been a leader and technology pioneer in industrial manufacturing and laser processing industry. Our products set the standard for the industry. The strict quality requirements and reliable customer service is our fundamental competitiveness.

Convincing Diversified Products

HGLaser's laser product line is very rich, covering laser welding brazing, cutting, drilling, surface peeling and marking in all areas. Variety specifications of laser marking machines are equipped with variety of different power levels and the laser source of all available wavelengths. Therefore, whatever your laser marking tasks can find the suitable laser marking machine.

01

Product Lines

02

Markets & Applitions

03

Fiber Marking Series

04

DPSS Marking Series

05

CO2 Marking Series

05

3D Marking Series

07

Solutions For Industry

08

Global Serives



01

Fiber Marking Series

HGLaser fiber laser marking machine has a general type, large marking area rotary double-station, portable and other series each series has a different power model each model can be equipped with safety shield, can also be customized dedicated models according to user's needs at the same time.

02

DPSS Marking Series

DPSS laser marking machine includes infrared, green and UV series, which is suitable for metal and various non-metallic materials marking, is the first choice for high quality laser precision micro-processing.



03

CO2 Marking Series

HGLaser launched the CO2 laser marking machine series, with its excellent quality, perfect marking effect and perfect service system to win the attention and trust of global users.



04

3D Marking Series

HGLaser launched the 3D laser marking machine, including fiber, UV and CO2 series, which is suitable for all kinds of metals and nonmetals laser marking on 3D surface, widely used in mobile manufacture, cubic circuits, medical equipments, moulds 3C electronics, auto parts, electronic communication, etc.



Laser marking is a marking method which using the high-energy density of the laser proceeds local illumination on the work piece, resulting in the surface material evaporation or chemical reaction of color variations, therefor leaving a permanent marking, with high precision marking, fast speed and clear marking characteristics etc. HGLaser has infrared, green, ultraviolet, CO2 laser light source can handle different materials and processing requirements.

1. Stainless Steel, Aluminum, Cast Iron Marking



Metal



Recommended models

HGLASER Fiber Marking Series

HGLASER

PRODUCT
SOLUTION

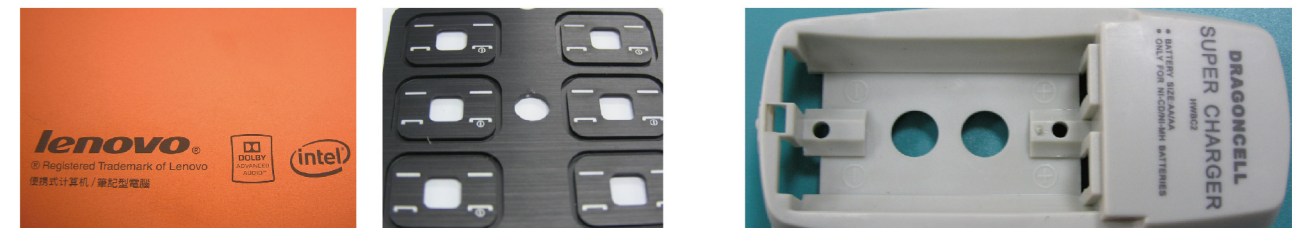
2. Auto, Mobile Phone Components Marking



Recommended models

HGLASER Fiber Marking Series
HGLASER DPSS Marking Series

3. 3C Parts Marking



- Lenovo laptop marking
- Phone button laser marking
- Charger panel laser marking



- Sony parts marking

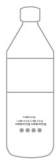


- Laptop keyboard laser marking

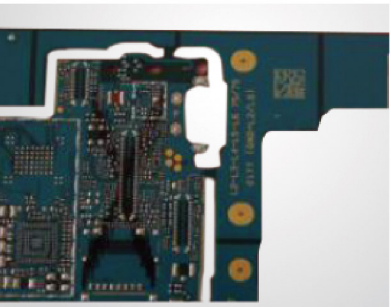
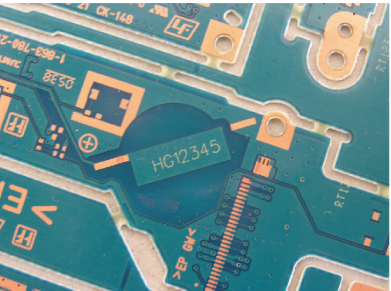
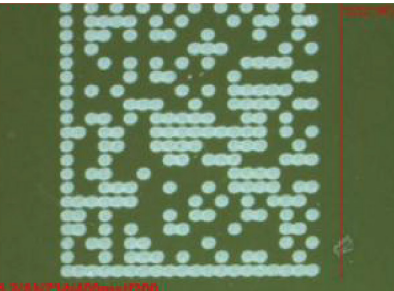
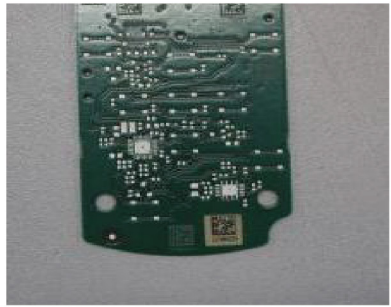
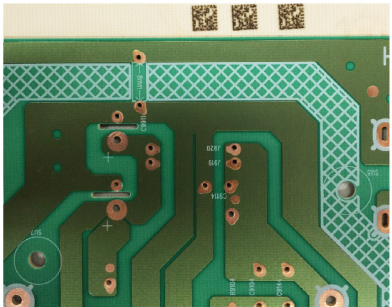
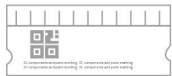
Recommended models

HGLASER Fiber Marking Series HGLASER DPSS Marking Series

4. Beverage. Food. Daily Packaging Marking



5. PCB Substrate Marking



Recommended models

HGLASER CO2 Marking Series HGLASER Fiber Marking Series
HGLASER DPSS Marking Series

Recommended models

HGLASER CO2 Marking Series HGLASER DPSS UV Marking Series



6. Plastic Parts Marking



Recommended models

HGLASER DPSS UV Marking Series
HGLASER Fiber Marking Series
HGLASER CO2 Marking Series

8. Glass Marking



• Red wine bottle marking

• Glass bottle marking QR code, high surface damage by using co2 marking, UV marking effect is relatively smooth .



• Beverage bottle marking

• Spirit bottle marking

Recommended models

HGLASER DPSS
UV Marking Series

7. 3D Marking



Recommended models

HGLASER Fiber Marking Series



• Copper parts marking

• Tool marking

• Bearing marking

• Nameplate marking

• Stainless steel copper marking

• Sanitary ware marking

9. Leather Marking



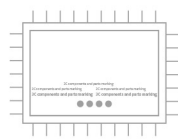
Recommended models

Recommended Models
HGLASER DPSS Green / UV Marking Series
HGLASER CO2 Marking Series



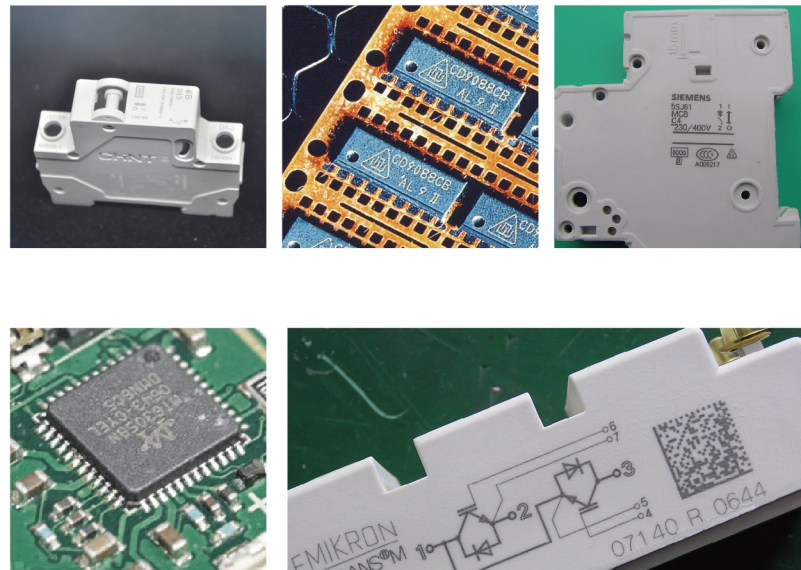


10. Electronic Components Marking



Recommended models

Recommended Models
HGLASER Fiber Marking Series
HGLASER DPSS UV Marking Series



11. Personal Care Products Tobacco Marking

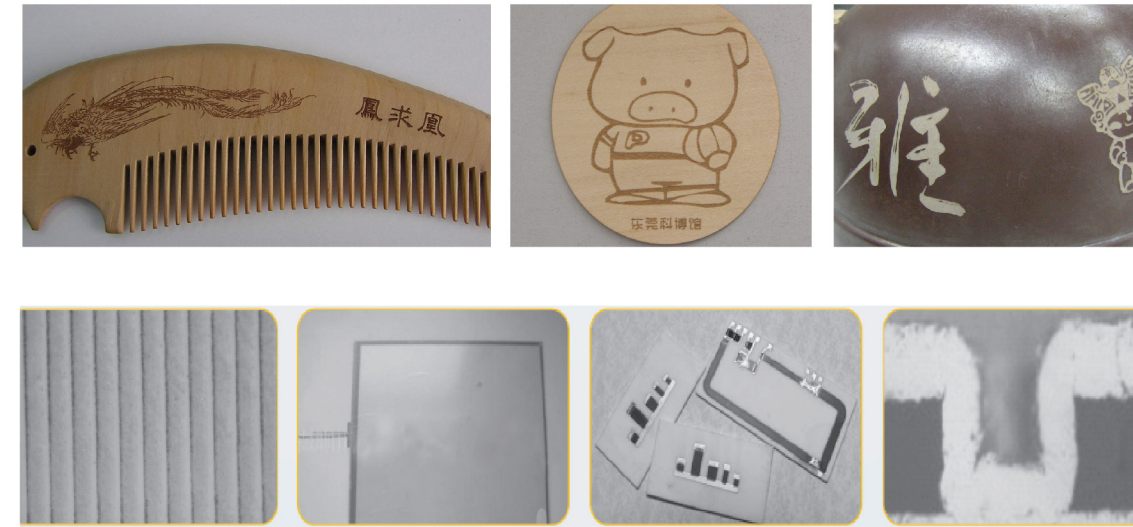


Recommended models

Recommended Models
HGLASER Co2 Marking Series
HGLASER Fiber Marking Series



12. Special Material Marking



- Aviation gold plating pieces
- Special-shaped card



- Pe pipe



- Wafer



- Crystal



- Ceramics

Recommended models

HGLASER CO2 Marking Series HGLASER DPSS Marking Series

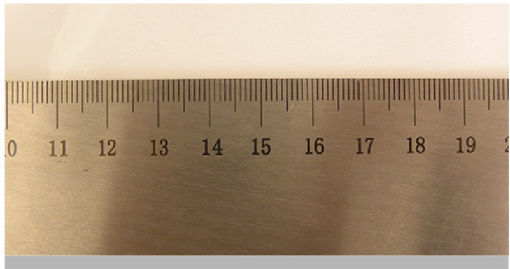
HGLASER FIBER MARKING SERIES

HGLASER
PRODUCT
ADVANTAGE

Laser marking is one of the most popular laser processing technologies. Laser marking is local irradiation in substances with high energy laser beam to make it evaporate rapidly and color change by physical or chemical reaction. These markers are permanent and hard to remove. Perfect marking effect, High marking speed and marking more clearly.

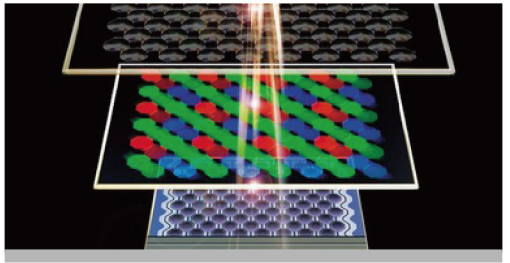
1.Perfect marking effect

Can mark various fine effects which are the users' requirement in an extremely tiny surface, has been known as "the king of marking" by client



2.Rich laser automation unit technology

Optional visual recognition, measurement technology, motion modules, fixture and other rich automation unit technology and modules



3.High marking speed, high efficiency

In the same time, the processing capacity significantly increased, Speed up the pay back on user investment



4.Overall structure integration

Compact, small footprint, easy to transport



All models of the series:

➤ LSF series



➤ LSF series



Equipment model	LSF20D	LSF30D	LSF50D	LSF100D
Nominal average output power	20W	30W	50W	100W
Laser Wavelength	1064nm			
Pulse repetition frequency	30~60 kHz	30~60 kHz	50~100 kHz	20~100 kHz
Average power stability	<3%rms			
Marking range (Optional)	F160/110×110 (Standard), F100/70×70, F210/145×145, F254/175×175)			
Minimum mark line width	0.06mm (Depends on the material)			
Minimum character height	0.2mm			
Scan speed	F=160mm, 7000mm/s			
Cooling method	Air cooling			
System power supply	1KW/AC220V/50Hz			
Total Weight	≈145kg (Net weight), 190kg(With packaging)			
Operating environment requirements	0~40° C, 30%≤RH≤85%			
Complete sets of equipment dimensions	820mm×640mm×1500mm (Length × Width × Height)			

Equipment model	LSF20	LSF30	LSF50	LSF100
Nominal average output power	20W	30W	50W	100W
Laser Wavelength	1064nm			
Pulse repetition frequency	20~200 kHz	30~200 kHz	50~200 kHz	50~200 kHz
Average power stability	<3%rms			
Marking range (Optional)	F160/110×110 (Standard), F100/70×70, F210/145×145, F254/175×175			
Minimum mark line width	0.06mm (Depends on the material)			
Minimum character height	0.2mm			
Scan speed	< 24urad (F=160, 4.3um)			
Cooling method	Air cooling			
System power supply	1KW/AC220V/50Hz			
Total Weight	≈145kg (Net weight), 190kg(With packaging)			
Operating environment requirements	0~40° C, 30%≤RH≤85%			
Complete sets of equipment dimensions	820mm×640mm×1500mm (Length × Width × Height)			



HGLASER FIBER MARKING SERIES

HGLASER

PRODUCT PARAMETER

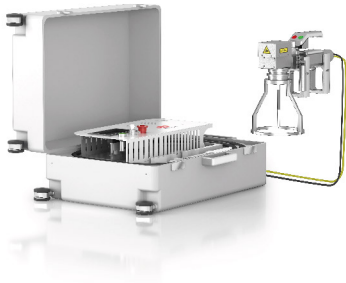


➤ Desktop Fiber Laser Marking Machine LSF - M



Equipment model	LSF - M		
Laser wavelength (nm)	1064nm		
Laser brand	Raycus		
Output power (W)	20	30	50
Galvo head marking speed	≤7000m/s		
Marking area	110mm×110mm (70mm×70mm 、 145mm×145mm 、 175mm×175mm, Optional)		
Pulse repetition frequency	30~60kHz		
Marking standard line height	0.06mm(Depends on the material)		
Minimum character height	0.2mm		
Marking software	Customized by HGLASER, can be directly imported .ai, .plt, .dxf etc		
Communication interface	USB, RS232		
Power supply	AV220V/50HZ, Voltage fluctuation range ±5%, if out of the range, voltage stabilizer would be needed		
Machine power consumption	0.6KW		
Net weight	65KG		

➤ Suitcase Fiber Laser Marking Machin LSF - B



Equipment model	LSF - B		
Laser wavelength (nm)	1064nm		
Laser brand	Raycus		
Output power (W)	20	30	50
Galvo head marking speed	≤7000m/s		
Marking area	110mm×110mm (70mm×70mm 、 145mm×145mm 、 175mm×175mm, Optional)		
Pulse repetition frequency	30 ~60kHz		
Marking standard line height	0.06mm(Depends on the material)		
Minimum character height	0.2mm		
Marking software	Customized by HGLASER, can be directly imported .ai, .plt, .dxf etc		
Communication interface	USB, RS232		
Power supply	AV220V/50HZ, Voltage fluctuation range ±5%, if out of the range, voltage stabilizer would be needed		
Machine power consumption	0.6KW		
Net weight	75KG		

➤ Portable Fiber Laser Marking Machine LSF - H



Equipment model	LSF - H		
Laser wavelength (nm)	1064nm		
Laser brand	Raycus		
Output power (W)	20	30	50
Galvo head marking speed	≤7000m/s		
Marking area	110mm×110mm (70mm×70mm 、 145mm×145mm 、 175mm×175mm, Optional)		
Pulse repetition frequency	30~60kHz		
Marking standard line height	0.06mm(Depends on the material)		
Minimum character height	0.2mm		
Marking software	Customized by HGLASER, can be directly imported .ai, .plt, .dxf etc		
Communication interface	USB, RS232		
Power supply	AV220V/50HZ, Voltage fluctuation range ±5%, if out of the range, voltage stabilizer would be needed		
Machine power consumption	0.6KW		
Net weight	≈45KG		

➤ Full protection fiber laser marking machine



Equipment model	LSF - H		
Laser wavelength (nm)	1064nm		
Laser brand	Raycus		
Output power (W)	20	30	50
Galvo head marking speed	≤7000m/s		
Marking area	110mm×110mm (70mm×70mm 、 145mm×145mm 、 175mm×175mm, Optional)		
Pulse repetition frequency	30 ~60kHz		
Marking standard line height	0.06mm(Depends on the material)		
Minimum character height	0.2mm		
Marking software	Customized by HGLASER, can be directly imported .ai, .plt, .dxf etc		
Communication interface	USB, RS232		
Power supply	AV220V/50HZ, Voltage fluctuation range ±5%, if out of the range, voltage stabilizer would be needed		
Machine power consumption	1KW		
Net weight	85KG		



HGLASER FIBER MARKING SERIES

HGLASER

PRODUCT PARAMETER



➤ HG-V series



Equipment model	HG-V20
Nominal average outputpower	20W
Laser Wavelength	1064nm
Pulse repetition frequency	20~80kHz
Average power stability	<3%rms
Marking range (Optional)	F160/110×110 (Standard), F100/70×70, F210/145×145, F254/175×175
Minimum mark line width	0.06mm(Depends on the material)
Minimum character height	0.2mm
Scan speed	F=160mm, 7000mm/s
Cooling method	Air cooling
System power supply	1KW/AC220V/50Hz
Total Weight	≈ 145kg(Net weight), 190kg(With packaging)
Operating environment requirements	0 ~ 40 °C, 30%≤RH≤85%
Complete sets of equipment dimensions	820mm×560(780)mm×1495mm (Length × Width × Height)

➤ LSFN series



Equipment model	LSF20N
Nominal average outputpower	20W
Laser Wavelength	1064nm
Pulse repetition frequency	1.6~1000kHz
Average power stability	<3%rms
Marking range (Optional)	F160/110×110(Standard), F100/70×70, F210/145×145, F254/175×175
Minimum mark line width	0.06mm (Depends on the material)
Minimum character height	0.2mm
Scan speed	F=160mm, 7000mm/s
Cooling method	Air cooling
System power supply	1KW/AC220V/50Hz
Total Weight	≈ 180kg (Net weight), 220kg(With packaging)
Operating environment requirements	0 ~ 40 °C, 30%≤RH≤85%
Complete sets of equipment dimensions	820mm×640mm×1450mm (Length × Width × Height)

➤ LSFH series



Equipment model	LSF20H
Nominal average outputpower	20W
Laser Wavelength	1064nm
Pulse repetition frequency	50~1000 kHz
Average power stability	<3%rms
Marking range (Optional)	F160/110×110 (Standard), F100/70×70, F210/145×145, F254/175×175
Minimum mark line width	0.06mm(Depends on the material)
Minimum character height	0.2mm
Scan speed	F=160mm, 7000mm/s
Cooling method	Air cooling
System power supply	1KW/AC220V/50Hz
Total Weight	≈ 180kg (Net weight), 220kg(With packaging)
Operating environment requirements	0 ~ 40 °C, 30%≤RH≤85%
Complete sets of equipment dimensions	820mm×560(780)mm×1495mm (Length × Width × Height)

➤ LSF Flexible car label marking machine series



Equipment model	LSF20LI
Nominal average outputpower	20W
Laser Wavelength	1064nm
Pulse repetition frequency	1.6~1000kHz
Average power stability	<3%rms
Marking range (Optional)	F254/175×175(Standard)
Minimum mark line width	0.06mm(Depends on the material)
Minimum character height	0.2mm
Scan speed	≤7000mm/s
Cooling method	Air cooling
System power supply	2 KW/AC220V/50Hz
Total Weight	≈480kg
Operating environment requirements	10 ~ 35 °C, humidity≤90%
Complete sets of equipment dimensions	1100mm×800mm×1670mm (Length × Width × Height)

All models of the series:

1.Have independent intellectual property rights and patentedtechnology

Stable equipment performance, high reliability, to satisfy the requirement of continuous 24 hours of full load operation, suitable for large quantities needs of factory processing



3.Long service life, easy maintenance

The average working life is 20 times as longer as that of the traditional machine, greatly reducing the equipment maintenance amount



2.Fine marking, good light mode

Exquisite marking lines, favorable rate of customer is reaching 100%



4.Low using cost

High electro-optical conversion efficiency, reducing the 75% energy consumption which compared with the traditional YAG marking machine



➤ LSG Green laser series



Equipment model	LSG10EA	LSG20EA	LSG40EA
Nominal average output power	20W	30W	50W
Laser Wavelength	532nm		
Pulse repetition frequency	20~200kHz		
Average power stability	<3‰rms		
Marking range (Optional)	F160/110×110(Standard), F100/60×60, F254/165×165		
Minimum mark line width	0.03mm(Depends on the material)		
Minimum character height	0.06mm		
Scan speed	F=160mm, 7000mm/s		
Cooling method	Water cooling		
System power supply	1.5KW/AC220V/50Hz		
Total Weight	≈255Kg		
Operating environment requirements	10 ~ 35 °C, humidity≤90%		
Complete sets of equipment dimensions	1212mm×640mm×1715mm (Length × Width × Height)		

HGLASER
DPSS MARKING
SERIES

HGLASER

PRODUCT
PARAMETER

➤ LSUE UV series



Equipment model	LSU3EA	LSU5EA
Nominal average output power	3W	5W
Laser Wavelength	355nm	
Pulse repetition frequency	20~200kHz	
Average power stability	<3%rms	
Marking range (Optional)	F170/105×105 (Standard), F120/140×140, F255/170×170	
Minimum mark line width	0.01mm(Depends on the material)	
Minimum character height	0.03mm	
Repeat positioning accuracy	<24 μrad(F170, 4.1 μm)	
Long time drift	<0.6 mrad, Constant ambient temperature +15 °C~+35 °C, 8 hours of continuous work)	
Scan speed	F=170mm, 7000mm/s	
Cooling method	Water cooling	
System power supply	1.5KW/AC220V/50Hz	
Total Weight	≈255Kg	
Operating environment requirements	10 ~ 35 °C, humidity≤90%	
Complete sets of equipment dimensions	1052mm×640mm×1715mm (Length × Width × Height)	

➤ LSUD UV double station



Equipment model	LSU3D	LSU5D
Nominal average output power	3W	5W
Laser Wavelength	355nm	
Pulse repetition frequency	20~200kHz	
Average power stability	<3%rms	
Marking range (Optional)	F170/105×105(Standard), F120/140×140, F255/170×170	
Minimum mark line width	0.01mm(Depends on the material)	
Minimum character height	0.03mm	
Scan speed	F=170mm, 7000mm/s	
Cooling method	Water cooling	
System power supply	1.5KW/AC220V/50Hz	
Total Weight	≈400Kg	
Operating environment requirements	10 ~ 35 °C, humidity≤90%	
Complete sets of equipment dimensions	1550mm×900mm×1825mm (Length × Width × Height)	

➤ LSUE UV series



Equipment model	LSU5EA	LSU12EA
Nominal average output power	5W	12W
Laser Wavelength	355nm	
Pulse repetition frequency	20~200kHz	1~200kHz
Average power stability	<3%rms	
Marking range (Optional)	F170/105×105(Standard), F210/140×140, F255/170×170	
Minimum mark line width	0.01mm(Depends on the material)	
Minimum character height	0.03mm	
Repeat positioning accuracy	<24 μrad(F170, 4.1 μm)	
Long time drift	<0.6 mrad, Constant ambient temperature +15 °C~+35 °C, 8 hours of continuous work)	
Scan speed	F=170mm, 7000mm/s	
Cooling method	Water cooling	
System power supply	1.5KW/AC220V/50Hz	
Total Weight	≈350Kg	
Operating environment requirements	10 ~ 35 °C, humidity ≤ 90%	
Complete sets of equipment dimensions	1240mm×700mm×1700mm (Length × Width × Height)	

HGLASER

PRODUCT
PARAMETER



DPSS MARKING
SERIES

HGLASER CO2 MARKING SERIES

HGLASER
PRODUCT
ADVANTAGE

All models of the series:

1.Exquisite marking lines

Using imported metal sealed RF excitation CO2 laser, stable and reliable performance, high repeatability accuracy and positioning accuracy, favorable rate of customer is reaching 100%



2.Long service life

Many manufacturers used CO2 laser which service life is only 5000 hours, and HGLaser used laser which service life up to 40,000 hours or more, 24 hours full load operation, can well meet the requirements of mass production and processing of enterprise



3.Environmentally friendly

Does not produce any harmful chemical substances to the environment and the human body, which is an environmentally friendly marking method



4.Simple operation

Powerful dedicated marking software, friendly man-machine dialogue interface, generally skillful workers can quickly independent operation



➤ LSC10/30/55 CO₂ Laser marking machine



Equipment model	LSC10	LSC30	LSC60
Nominal average output power	10W	30W	60W
Laser Wavelength	CO ₂ /10.6μm	CO ₂ /10.6μm	CO ₂ /10.6μm
Pulse repetition frequency	≤20kHz	0~25kHz	0~25kHz
Average power stability	±5%		
Marking range (Optional)	F150/107×107(Standard), F200/140×140, F250/175×175		
Minimum mark line width	0.1mm(Depends on the material)		
Minimum character height	0.4mm		
Scan speed	F=150mm, 7000mm/s		
Cooling method	Air cooling		
System power supply	1.5KW/AC220V/50Hz		
Total Weight	≈170Kg		
Operating environment requirements	Synrad 10W CO ₂ laser: 15 ~ 40 °C; Coherent 30W CO ₂ laser: 5 ~ 40 °Chumidity≤90%		
Complete sets of equipment dimensions	640mm×930mm×1435mm (Length × Width × Height)		

➤ LSC100/150 CO₂ marking machine



Equipment model	LSC100	LSC150
Nominal average output power	100W	150W
Laser Wavelength	CO ₂ /10.2~10.7μm	CO ₂ /10.2~10.8μm
Pulse repetition frequency	0~100kHz	0~100kHz
Average power stability	±10%	≤±7%
Marking range (Optional)	F150/107×107(Standard), F100/70×70, F200/140×140, F250/175×175	
Minimum mark line width	0.1mm(Depends on the material)	
Minimum character height	0.4mm	
Repeat positioning accuracy	<24μrad(F150, 3.7μm)	
Long time drift	<0.6 mrad, Constant ambient temperature +15 °C~+35 °C, 8 hours of continuous work	
Scan speed	F=150mm, 7000mm/s	
Cooling method	Water cooling	
System power supply	4.5KW/AC220V/50Hz	
Total Weight	≈350Kg	
Operating environment requirements	5 ~ 40 °C, humidity≤90%	
Complete sets of equipment dimensions	Control cabinet, laser profile frame, the working table was presented distributed arrangement (Length × Width × Height)	



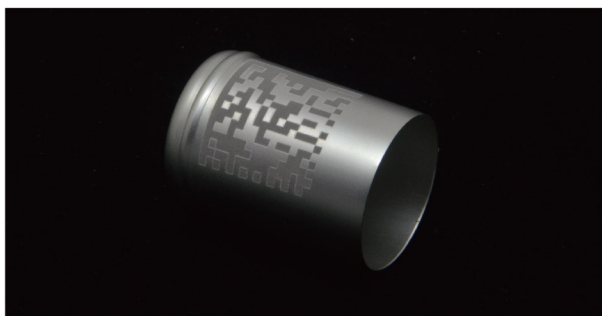
All models of the series:

➤ Fiber 3D Laser Marking Machine

No.	LSF20DS、LSF30DS、LSF50DS、LSF100DS	Remarks
Laser	20W、30W、50W、100W	Raycus/IPG Laser Source
Scanner	3D Scanner	Fine, accurate, fast and stable performance with range 400×400mm、600×600mm、800×800mm
IPC	HGLaser	High stability of continuous work, and strong anti-interference ability, smoothly software editing and running.
Control Card	HGLaser	Stable performance.
Marking Software	HGLaser	Software is easy to operate and edit, also compatible with other software formats.
Lifting Mechanism	Strike 540mm	Stable and reliable performance by four guide rod lifting mechanism.
Cabinet	Standard small cabinet, chiller size 1240mmX800mmX1850mm	High strength cabinet and load capacity, internal device with good grounding, and strong anti-interference ability.
Protecting Cover	HGLaser	For laser protection use.
Chiller	HGLaser	Air cooling.
Power Supply	1KW/AC220V/50Hz	

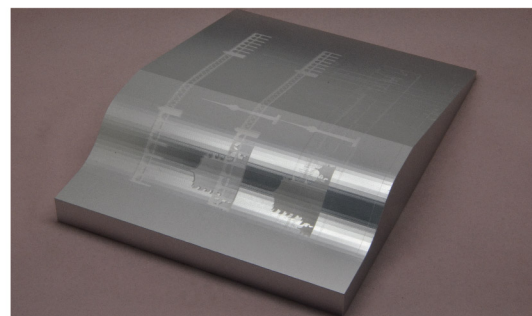
1、First Class 3D Marking Technology

The laser marking can be achieved more accurately on the surface of workpiece, and there is no defocus in processing. Even complex surface can be handled freely. 3D dynamic laser marking process are controlled by self developed hardware and software, and a special three dimensional galvanometer is configured to control the laser beam mark on any 3D surface perfectly.



2、High Precision 3D Positioning Technology

High speed focusing and scanning system, laser beam base mode, short pulse, high peak power, high repetition rate, bring the perfect marking result for customer.



3、Leading 3D Graphics Processing Technology

The operation interface is friendly and suitable for various formats such as DXF, PLT, CNC, STEP, IGES and so on.



4、Great Performance

High photoelectric conversion, long service life, simple maintenance, fast marking speed and high efficiency, independent light source, guaranteed performance and service, flexible extensible configuration, optional automatic lifting, automatic focusing and rotation functions.



➤ 3D Marking Series





3D MARKING SERIES

HGLASER

PRODUCT
PARAMETER



HGLASER

PRODUCT
PARAMETER

➤ 3D UV Laser Marking Machine

No.	LSU3DS、LSU5DS	Remarks
Laser	20W、30W、50W、100W	UV integrated laser source
Scanner	3D Scanner	Fine, accurate, fast and stable performance with range 100×100mm, 200×200mm, 300×300mm, 400×400mm
IPC	HGLaser	High stability of continuous work, and strong anti-interference ability, smoothly software editing and running.
Control Card	HGLaser	Stable performance.
Marking Software	HGLaser	Software is easy to operate and edit, also compatible with other software formats.
Lifting Mechanism	Strike 540mm	Stable and reliable performance by double 170 profile lifting mechanism.
Cabinet	Standard small cabinet, chiller size 1240*700*1698mm	High strength cabinet and load capacity, internal device with good grounding, and strong anti-interference ability.
Protecting Cover	HGLaser	For laser protection use.
Chiller	HGLaser	Integrated circulating water cooling.
Power Supply	1.5KW/AC220V/50Hz	

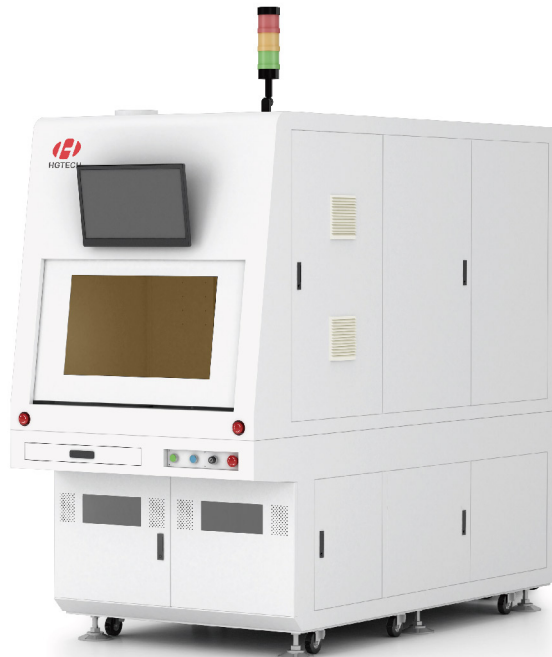
➤ LSC30DS Laser Marking Machine

No.	LSC10DS, LSC30DS, LSC100DS, LSC150DS	Remarks
Laser	10W、30W、100W、150W	CO2 Laser Source
Scanner	3D Scanner	Fine, accurate, fast and stable performance with range 400×400mm, 600×600mm, 800×800mm
IPC	HGLaser	High stability of continuous work, and strong anti-interference ability, smoothly software editing and running.
Control Card	HGLaser	Stable performance.
Marking Software	HGLaser	Software is easy to operate and edit, also compatible with other software formats.
Lifting Mechanism	Strike 285mm	Stable and reliable performance by double 170 profile lifting mechanism.
Cabinet	Standard cabinet size 1200*1100*1712mm	High strength cabinet and load capacity, internal device with good grounding, and strong anti-interference ability.
Protecting Cover	HGLaser	For laser protection use.
Chiller	HGLaser	Air cooling.
Power Supply	1.5KW/AC220V/50Hz (10W、20W) 4.5KW/AC220V/50Hz (100W、150W)	

➤ 3D Marking Series



➤ 3D Marking Series

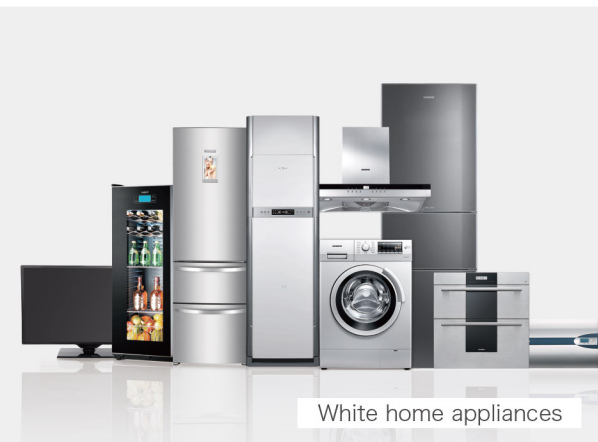


CONVINCING
MARKING
EFFECTQUALITY &
EFFICIENT
AFTER-SALES
SERVICE

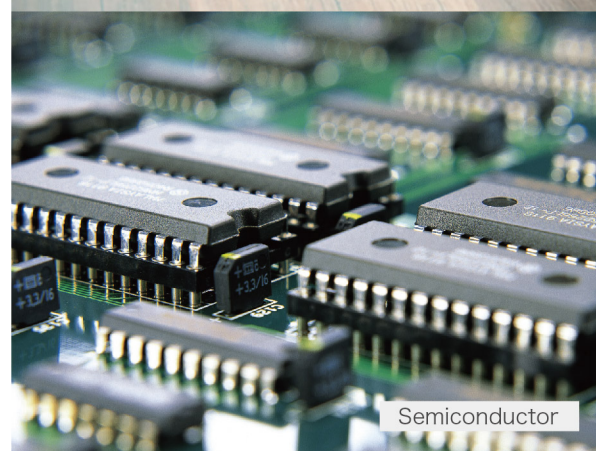
HGLASER

GLOBAL
MARKETING
CONNECTIONS

3C Industry



White home appliances



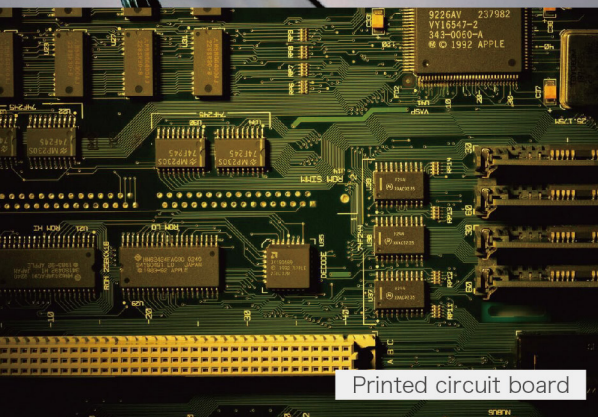
Semiconductor



Brittle material



Automobile Industry



Printed circuit board



Continuously persist “Client as God and Market Orientation” , HGLASER has established perfect market service system. More than 40% of employees are market sales and service staffs. We have set up more than 40 offices in domestic, distributed in major central cities, so as to implement “Closer to the user, extending the service” . The nationwide sales network ensures timely and quick response to customers.



For more examples please see: <http://en.hglaser.com/>